

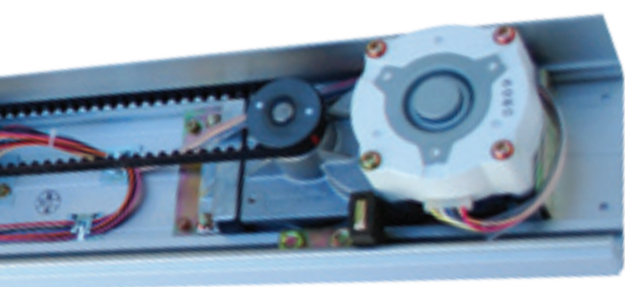
EDM-18GII/EZ Control Box



Features

- > Voltage acceptance AC200-240V (AC220V)
- > Multi-function microprocessor control
- > Automatic break position & door stroke
- > Long term memory without power
- > Standard inputs accepted
- > 24V DC power output for accessories

EDM-18GII/EZ Motor Gear Box



Features

- > Brushless molded DC motor
- > Door weight up to 90kg per leaf
- > Adjustable speed 500mm/s max

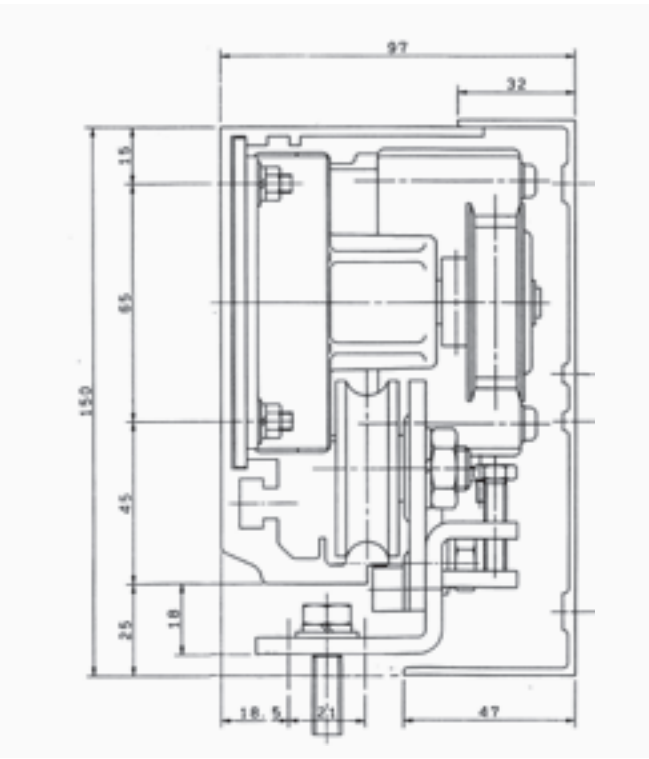
Specification

Technical			
		Single Sliding	Doule Sliding
Model		EDM 18GII-S	EDM 18GII-D
Applicable Door (max.)	Dimensions	DW1219 x DH2134 mm	DW1067 x DH2134 mm
	Weight	90kg	80kg x 2
Power supply/consumption		AC200-240V 50,60Hz 1.5A (AC220V)	
Manual door opening/closing force during power failure		24.5~39.2N (2.5~4kgf)	29.4~49.0N (3~5kgf)
Rated operation		Continuous opening and closing assured	
Door open/close force		High speed 137.2N (14kgf) Low speed 78.4N (8kgf)	
Motor		Brushless, molded DC motor	
Reduction gear		Enclosed all-belt system	
Control system		Microprocessor control	
Insulation resistance		10 MΩ or more at 500V DC	
Dielectric strength		AC1000V for one minute	

Delivery

MICOM EDM-18GII/EZ Series - Supplied in formats as follows:

- > **EDM-18GII/EZ ‘COMPLETE OPERATOR’** consisting of: Base Rail, Cover, Control Box, Connection Harness, Motor Gear Box, Connection Terminal, End Covers, Tooth Belt, Belt Bracket Link Assembly, Belt Connection Single & Double Door, Belt Tightening / Idle Pulley Assembly, Hanger Roller Brackets x4 and Stopper x 2.
- > **COMPLETE OPERATOR** - Standard Rail Length: Single Leaf - 2000mm, Double leaf - up to 5000mm
- > **EDM-18GII/EZ ‘FULL KIT’** - (Without Rail & Cover) consisting of: Control Box, Connection Harness, Motor Gear Box, Connection Terminal, Tooth Belt (7M), Belt Bracket Link Assembly, Belt Connection Single & Double Door, Belt Tightening / Idle Pulley Assembly, Hanger Roller Brackets x4 and stopper x 2.
- > **RAIL & COVER** - (Material Only) - Standard Length: Single Leaf - 2000mm, Double leaf - up to 5000mm



UK / European Office
The Grainger Suite // Regent Centre // Gosforth
Newcastle upon Tyne // NE3 3PF // United Kingdom

Telephone. +44 (0)191 233 6323
Facsimile. +44 (0)191 284 0222
Email. info@micomautodoor.com

MICOM-NHN Japan
Kenwa Co. Ltd.,
6th Floor // Marutake Honmachi Building
6-18 Honmachi 1-Chome // Chuo-ku Osaka 541-0053 // Japan

Telephone. +81 6 6265 1130 // +81 6 6265 1131
Facsimile. +81 6 6265 1132
Email. info@micomautodoor.com // info@kenwa.co.jp

100% Japanese Quality and Engineering
MICOM & NHN are registered trademakrs and divisions of Kenwa Company Limited, Osaka, Japan



Introduction

Introduction

EDM 18GII/EZ Series Automatic Door Operator offers simple door automation and high performance in one. It is the optimum solution for all who value quality and competitiveness. Our unbeatable reliability and prolonged service life is proven over all other automatic door products on the market today.

EDM18GII/EZ is a truly reliable and low noise operator. Utilizing a Brushless Molded DC Motor, producing minimal heat and eliminating any danger of system overload by excessive motor temperature problems, EDM 18GII/EZ provides reliable and efficient door operation with no interruption. The use of the Brushless Molded DC Motor and Enclosed Reduction Gear also ensures silent door operation, requiring no maintenance, whilst improving overall long term durability.

Connections for sensor and other inputs are located as either an independent input terminal on the rail or by adding MICOM Sensor and Battery Monitoring board (SMB) for EN16005 Compliance.

MICOM inbuilt safety features and quality components will ensure EDM- 18GII/EZ Series is safe and reliable, while providing you with assured long term service.

Main Features

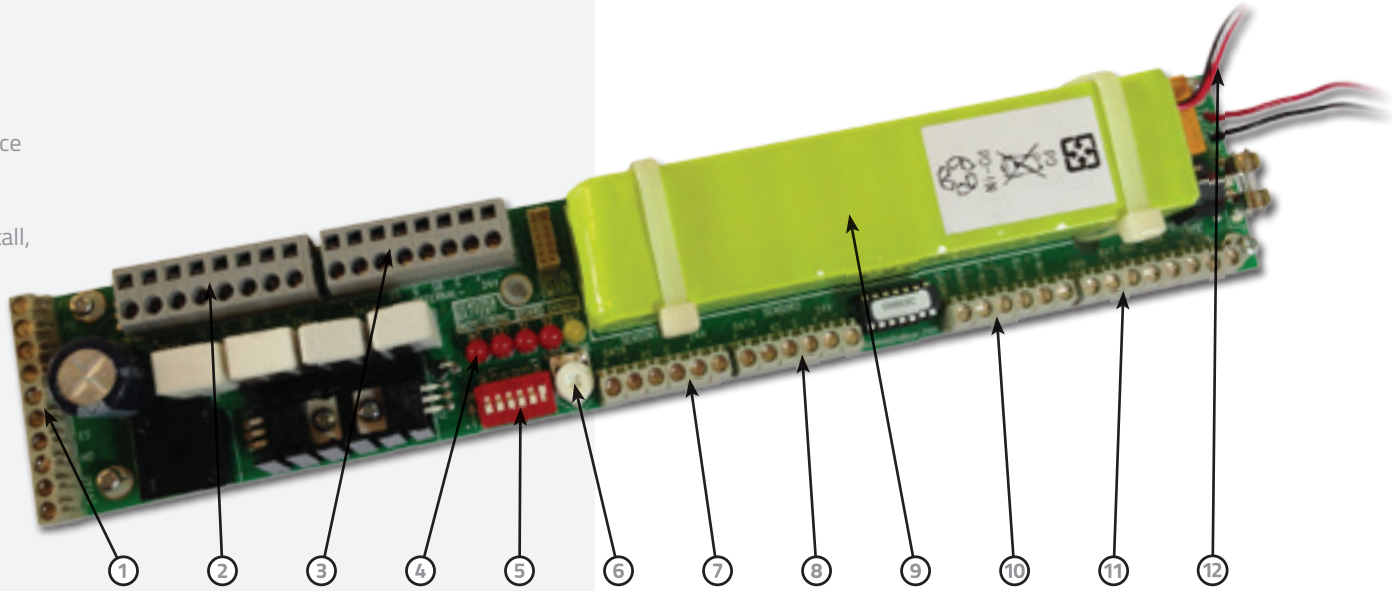
- › Economical & Cost Effective Sliding Door Solution
- › Power input 200-240VAC
- › Door Capacity 90kg per leaf
- › Door Speed 500mm/s max
- › Memorized one time door stroke
- › Easily accessible sensor and threshold safety Inputs
- › 24V DC Power Output for Accessories
- › Safe & Long Term Operation Guaranteed
- › Simple Door Parameter Setting
- › Door Speed & Braking Adjustment
- › Energy Saving (% Open) Function
- › Ratchet or Flip-Flop Function

EN16005 Compliance

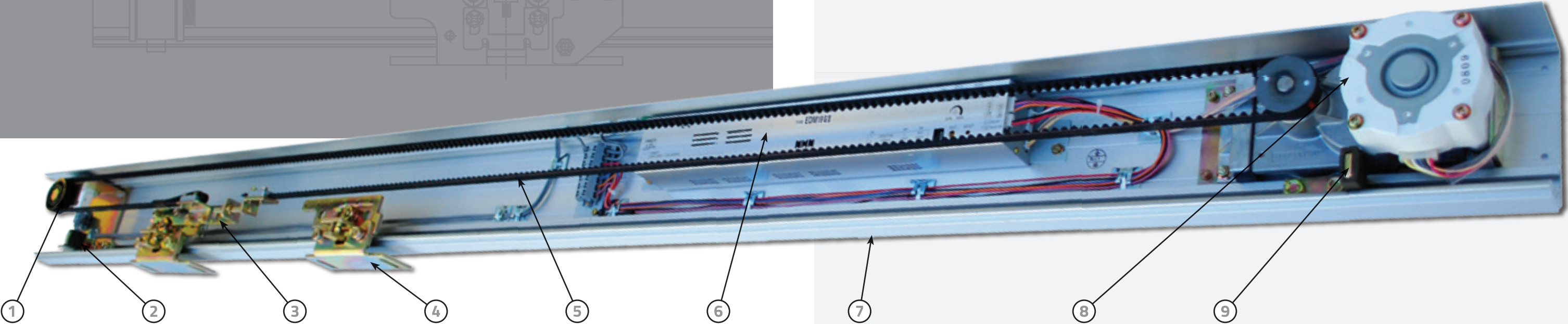
MICOM SMB is a SENSOR & BATTERY MONITORING SYSTEM which offers compliance with EN16005 across our range of EDM Series automatic sliding door operators. It is compatible with models EDM NII, GII/EZ & MD Series.

MICOM SMB is a modular system for enhanced automatic door safety. Simple to install, whilst offering added protection and multi-functional features which include:

- › Conforming to EN16005
- › Individual Sensor Monitoring & Safety
- › Battery Functions & Monitoring
- › Key Function Selector Switch (Locked / Exit / Automatic / Hold Open, plus Emergency - Anti Panic Open)
- › Individual Sensor Inputs & Wiring
- › LED Indicator (Mode & Error)
- › Emergency Open Input
- › 24VAC Power Input (Isolated Transformer)
- › Night Mode (Switch) Input
- › Secure E-Lock Functions



No:	Description
1.	SMB output to Control Box
2.	Internal Sensor Input
3.	External Sensor Input
4.	LED Error Indicator
5.	DIP Switch
6.	E-Lock Timer
7.	Side Screen Sensor Input 1
8.	Side Screen Sensor Input 2
9.	Battery Pack
10.	Selector Switch Input (4 wire)
11.	E-Lock & Battery Output
12.	Battery Connection



EDM-18GII/EZ when used without SMB can also accept all current sensors available in the world market today, such as BEA Eagle & Optex OA-203C together with threshold safety beam protection.

EAGLE Series is a microwave sensor which detects movement. Utilising a planar antenna together with multi directional detection modes, the EAGLE offers high levels of stability and reliability. It is the solution for all types of automatic doors, irrespective of the surroundings utilizing K-band microwave technology.



OS-12C Safety Beam is an active infrared safety beam system. Its amplifier and sensor heads are designed for fast, simple installation while maintaining the highest standards of safety and reliability. Recognized by door professionals worldwide for its reliability and resistance to sunlight and other interference.



Accessories

Accessories

MICOM Function Selector Switches offer several options of door control. As either a rotary knob or with a secure key, allows selection of 4 to 5 separate door modes. Economic in design, MICOM Function Selector are easy to install and operate. Supplied in a fire retardant black plastic mount box, with attractive cover design in white, our function selectors can be fitted to walls or aluminium frames alike.

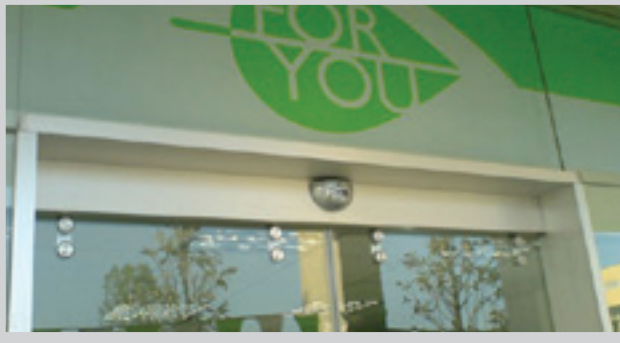
Section Functions:

- › Position 1. Closed / Night
- › Position 2. Exit Only (Entry Only available as additional option)
- › Position 3. Automatic
- › Position 4. Hold Open

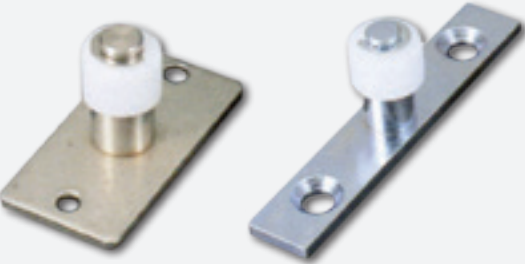
With Push Button (option) for Exit in case night function is selected. Finished complete with 3m Cable.



Door Profile Solutions - Various Fixed and Moving profile designs available without glass.



Frameless Glass Brackets - Fitting Brackets for 10mm and 12mm Glass thickness available without glass.



Floor Guides - Various floor guides for framed and frameless glass doors available.

Product Summary

Product Summary

No:	Description
1.	Timing Pulley
2.	Power ON/OFF Switch
3.	Belt Bracket Link Assembly
4.	Hanger Roller Bracket
5.	Belt
6.	Control Box Assembly
7.	Base Rail
8.	Gear Box Assembly
9.	Stopper

Simple Design and Installation

With all parts installed directly from the front onto our base rail, any component can be moved easily during or after the initial installation process. Parts can also be added or replaced simply for servicing purposes. Therefore time spent on Installation or servicing is greatly reduced.

Easy Set-up

Door stroke learning and breaking position are automatic, making EDM 18GII/EZ truly quick and easy to setup. Door stroke and breaking point are automatically calculated according to door weight and size. Braking position is automatically adjusted to suite each door independently. Door Parameters can be easily reset using flush memory when the door stroke is changed. This data is retained within the control memory, even without power supply.

EDM-18GII/EZ together with **MICOM SMB** when used as a complete operator, complies with all new EU regulations (EN16005) for enhanced automatic door safety. Designed for use with a new range of sensors such as BEA IXIO-S & Optex OA-Axis-T.

IXIO-S is an active infrared presence sensor. The tridimensional area of its infrared curtain protects the users from any contact with the doors. Adjustment is made easier with an LCD screen offering 10 different widths of curtains, to cover the full travel area of the door.



OA-AXIS-T Series based on active infrared technology. Developed as a combination sensor for threshold safety and activation, the OA-Axis T is in compliance with the latest European and local regulations as EN 16005 and DIN 18650, tested and approved by the German test organisation TÜV. Due to its variety in output options the OA-Axis series meets the requirements in various markets throughout Europe.